

G-STAR TRIS SERIES

AUTOMATIC 3-D RE-BAR BENDERS



**PIONEERS IN
3-D BENDING**



A complete range of programmable **2-D** and **3-D** re-bar benders to meet a vast range of concrete reinforcing applications.

- ✓ With all the unique features of the G-STAR SE SERIES
- ✓ Elimination of secondary bending operations.
- ✓ High output of 3-D support elements for bars, mesh and pre-cast elements.



- ✓ The sophisticated bending system employs one classical rotating bending plate with incorporated cutter and one 3-D bending head with retractable twin roller design for unlimited shape possibilities. (Patented)
- ✓ The 3-D bending unit is concealed behind the front working plate of the machine and appears automatically only when bends are required out of the plane.
- ✓ The second bender is adjustable both in terms of height and angle of incidence with respect to the rod axis, thus providing the user with enormous possibilities on 3-D forms.
- ✓ G-STAR TRIS series are standard equipped with an electric Adjustable counter-torsion system and the automatic torsion eliminator "ATE" which always produce flat shapes regardless of rebar quality, axial twist and bending direction (Patented).
- ✓ Two types of straightening roller adjusting systems are available.
- ✓ The Hexagon Shaft Pre-setting System and the Fully automatic roller adjusting system "ASA"



ADD AN EXTRA DIMENSION TO YOUR PRODUCTION

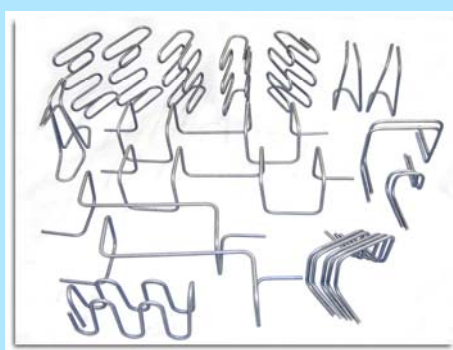
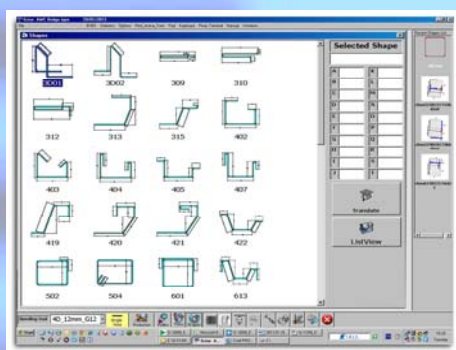


- ✓ Two robust roller subassemblies, powered by a servomotor ensure accurate feeding and excellent straightening.
- ✓ All lower rollers of the straightening and feeding unit are powered, thus creating a positive, precise feed force.
- ✓ Re-bar marking is reduced to a minimum and roller life is maximized due to even power distribution and offset roller design.
- ✓ The heavy duty construction of the straightening and feeding unit absorbs all vibrations caused by the re-bar ribs.
- ✓ Ergonomic operator interface with user friendly software.
- ✓ Remote trouble-shooting via Internet.



G-STAR TRIS 3-D Re-bar Benders are available with:

- ✓ Automatic Re-Bar Size Changing Unit "AWC"
- ✓ Product identification stamping
- ✓ Straight rod collection station
- ✓ Bending table Inclination mechanism
- ✓ Automatic stirrup collector.



TECHNICAL SPECIFICATIONS	G-STAR 12 TRIS	G-STAR 14 TRIS	G-STAR 16 TRIS	G-STAR 20 TRIS
Single strand 3-D	Ø 5-12 mm (#4)	Ø 6-14 mm (#4)	Ø 6-16 mm (#5)	Ø 8-20 mm (#6) *
Double strand 2-D	Ø 5-8 mm	Ø 6-10 mm (#3)	Ø 6-12 mm (#4)	Ø 8-16 mm (#5)
Feeding speed	140 m/min (460 ft/min)	120 m/min (390 ft/min)	110 m/min (360 ft/min)	100 m/min (330 ft/min)
Feeding accuracy	± 0.5 mm (±0.02")	± 0.5 mm (±0.02")	± 0.5 mm (±0.02")	± 0.5 mm (±0.02")
Bending speed 2-D	1200 °/sec	1000 °/sec	1000 °/sec	800 °/sec
Bending speed 3-D	600 °/sec	600 °/sec	500 °/sec	500 °/sec
Bending angle 2-D	± 180°	± 180°	± 180°	± 180°
Bending angle 3-D	+ 180°	+ 180°	+ 180°	+ 180°
Bending accuracy	± 0.5°	± 0.5°	± 0.5°	± 0.5°
Installed power (kW)	16	18	20	26
Power consumption (kWh)	5	6	7	8
Main machine weight	3300 kg	3700 kg	4200 kg	4400 kg

*up to 450 N/mm² Ø20 mm (#6)

For your nearest EUROBEND representative, please, contact:

EUROBEND GmbH

ADVANCED TECHNOLOGY PRODUCTS

Allersberger Str. 185, Geb. G-3
D-90461, Nürnberg GERMANY

TEL: +49-911-9498980

TEL: +30-210-8077775

WEBSITE: www.eurobend.com

FAX: +30-210-6206567

e-mail: info@eurobend.com

