

PLR COMPACT SERIES

***MESH WELDING LINES FOR FAST PRODUCTION
OF CUSTOMIZED AND SMALL TO MEDIUM MESH SIZES***



- The “**PLR COMPACT**” Series of mesh welding lines offer hydraulic and servo-motor driven operation, and ensure simple machine layout, reliable and cost-effective production of mesh sheets from coils.
- The machines are designed for heavy duty continuous operation within the reinforcing industry.
- Ultimate flexibility and unlimited processing capabilities.



- All types of mesh used in concrete blocks, pre-cast elements and other prefabricated concrete reinforcing products, (cages, channels, etc.) can be produced.
- Independent and individually adjustable welding heads cover different product widths and line wire spacing.
- Repositioning of the welding heads in seconds due to our unique quick release mechanisms.



PLR COMPACT SERIES

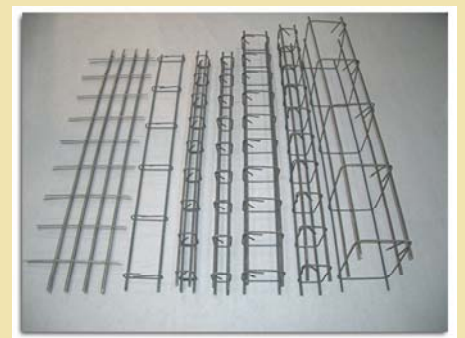
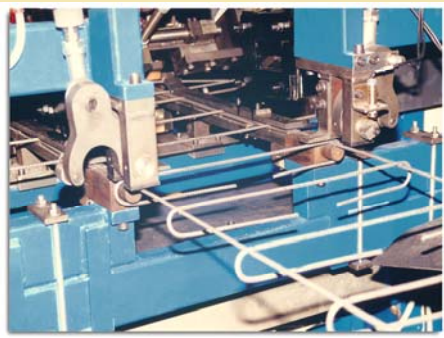


- Programmable line wire feeding allows variable cross wire spacing within the same mesh sheet.
- Line wires are fed directly from coils through a compact straightening and multi-roller feeding unit.
- Cross wires are either fed directly from coil or through an automatic rack type feeder from pre-cut bars.
- User friendly software requires no programming skills.
- Operator is only required to supervise the production process and remove the automatically produced mesh sheets.



PLR COMACT models are available with:

- Offset carrier for curved mesh sheets.
- In-line cross wire overhang bending heads and wire trimming stations.
- High speed in-line cut-off shears.
- Automatic mesh stacking and turning units.
- Mesh transportation and bundling systems.



PLR COMPACT SERIES		S-Version		SE-Version	
Max. Welding width	mm	1.200	1.600	1.200	1.600
Max. Mesh width	mm	1.400	1.800	1.400	1.800
Max. Mesh Length	mm	6.000		6.000	
Line wire feeding		COIL		COIL	
Cross wire feeding		COIL or PRE-CUT			
Max number of Line wires	up to	4	6	4	6
Line wire spacing	mm	(50) 75 above infinite			
Cross wire spacing	mm	min. 50 above infinite			
Line wire diameters	mm	4 – 10 and 4 – 12			
Cross wire diameter	mm	4 – 8 (12)		4 – 8 (12)	
Working speed	C.W./M.	70		120	

For a free video CD and your nearest EUROBEND representative, please, contact:

EUROBEND GmbH
ADVANCED TECHNOLOGY PRODUCTS

Allersberger Str. 185, Geb. G-3
D-90461, Nürnberg GERMANY

TEL: +49-911-9498980

TEL: +30-210-8077775

WEBSITE: www.eurobend.com

FAX: +30-210-6206567

e-mail: info@eurobend.com

