

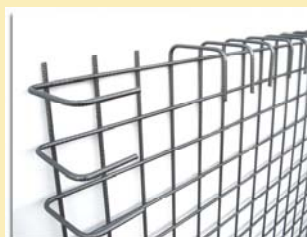
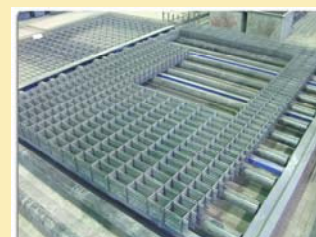
THE NEW AMM SERIES

FULLY AUTOMATIC WELDING LINES

FOR THE PRODUCTION OF CUSTOMIZED MESH



- The **AMM series** cover every application in the production of **engineering, construction, customized mesh and mesh with openings** for prefabricated concrete elements
- Any type of mesh can be produced instantly without any adjustments
- Different models are available for both the economic and high output production of mesh, offering maximum flexibility without changeover adjustments, due to unique design and operation of the machines
- Capable of producing large and small batches-orders consecutively without any downtime
- Line and cross wires are fed fully automatic from two FLEXI-LINE hyperbolic rotor straightening and cutting machines with up to six different diameters and automatic convergence diameter changing system (Patented)



AMM SERIES

FLEXIBLE MESH WELDING LINES

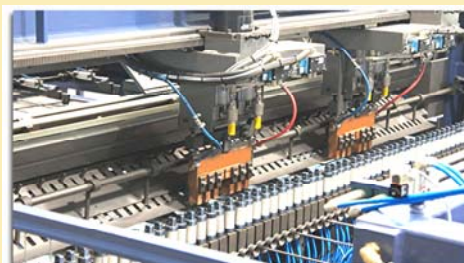
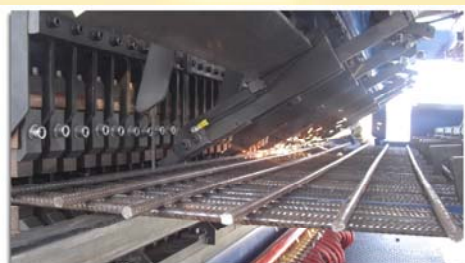


- The PATENTED extremely fast and automatic coil changing system enables the processing of different re-bar diameters in the same mesh
- Automatic Re-bar STRAIGHTENING & CUTTING MACHINE, processing up to six (6) interchangeable coils with advanced (4G) hyperbolic roller straightening technology
- Separate compartments for each de-coiling station allows new coil feeding during machine operation ensuring continuous production of the welding line
- Single or double feeding of line and cross wires through FLEXI-LINE straightening and cutting machines, depending on the output demand, eliminate idle and change over times ensuring continuous operation





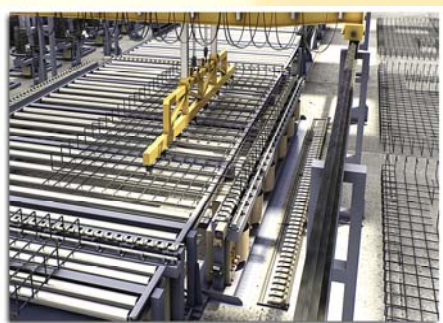
- Single or double programmable, servo-motor driven welding head configuration PL XY and PL XY II with 4 or 8 welding points or multi-head configuration with up to 81 fixed welding heads PLC type, depending on the output demand
- PLC AMM II with full welding heads, twin wire feeding for line and cross wires through our FLEXI-LINE TWIN series straightening machine along with separate compartments for each de-coiling station allows continuous operation of the welding line exceeding productivity of most standard mesh welding lines
- No downtime when changing:
 - ✓ Wire coils – spacing - diameters
 - ✓ Mesh dimensions - type



AMM SERIES



- Cold or hot rolled materials from 4mm up to 20mm from coil can be processed automatically by the machine.
- Different line and cross wire diameters can be welded in the same mesh.
- Capable of producing large and small batches-orders consecutively without any downtime
- In-line mesh bending stations, collection tables with roller or laterally discharging chain conveyors with height adjustment are available
- Compact system Lay-Out with minimum floor requirements.
- Remote access via Internet for troubleshooting and routine maintenance.



AMM SERIES	Working Range	XY AMM	XY II AMM	PLC AMM	PLC AMMII	
Welding width	mm	3.000, 3.600, 4.000		2.800, 3.200, 3.600, 4.000		
Mesh length	mm	6.000, 9.000, 12.000				
Line wire feeding		FLEXI-LINE Rotor straightener up to 6 lines from Coils				
Cross wire feeding		FLEXI-LINE Rotor straightener up to 6 lines from Coils				
Line wire spacing	mm	50 above in steps of 50		50 above in steps of 50		
Welding Points	Max.	4	8	57	73	81
Cross wire spacing	mm	50 above stepless				
Line wire diameters	mm	4-12, 5-16, 6-20		4-12, 5-16, 6-20		
Cross wire diameter	mm	4-12, 5-16		4-12, 5-16		
Line wire Feeding Speed	m/min	60		100	180	
Cross wire Feeding Speed	m/min	60		100	180	
Engineering Mesh		YES		YES		
Mesh with openings		YES		YES		
Setup time for different mesh type		"0"		"0"		
Setup time for different wire diameters		"0"		"0"		
Working speed*	Welding Points /min.	Up to 200	Up to 400			
	Cross Wires/min.	Up to 30	Up to 40	Up to 50	Up to 80	
Space demand	For Machine Producing Mesh up to 4 x 9 meters	12,5 x 38,5 m				

For a free video and your nearest EUROBEND representative, please, contact:

EUROBEND GmbH

ADVANCED TECHNOLOGY PRODUCTS

Allersberger Str. 185, Geb. G-3
D-90461, Nürnberg GERMANY

New Production Plant

Siemensstr. 1.
D-65795 Frankfurt a.M. GERMANY

TEL: +49-911-9498980

e-mail: info@eurobend.com

www.eurobend.com